



Community Assessment and Community Congruence

Understanding Community Needs and Alignment

Peer2Peer
WHOLE-WELLNESS

Brown, Jack. (2024, July 28). Community assessment and community congruence: Understanding community needs and alignment. <https://tepoga.org/community-assessment-and-congruence/>. URL



Introduction

Welcome to our presentation on Community Assessment and Community Congruence.

Today, we'll explore what community assessment and community congruence are, why they are important, and the steps involved in these processes.

We'll also discuss various methods and tools used in this process.



What is Community Assessment?

Community assessment is a systematic process for identifying the needs, resources, and strengths of a community.

It provides a foundation for planning and implementing effective programs and services that address the community's needs.



Importance of Community Assessment

Understanding a community's needs and resources is essential for effective planning and decision-making.

Community assessment helps to identify gaps, allocate resources efficiently, and engage community members in the development process.

Goals of Community Assessment



The main goals are to gather information about the community, identify its needs and strengths, prioritize issues, and develop action plans.

This process ensures that interventions are tailored to the community's unique context.

Steps in Conducting a Community Assessment

Key steps include defining the community

- collecting data
- analyzing data
- identifying priorities
- developing an action plan.

Each step involves specific activities and methods to ensure a comprehensive assessment.

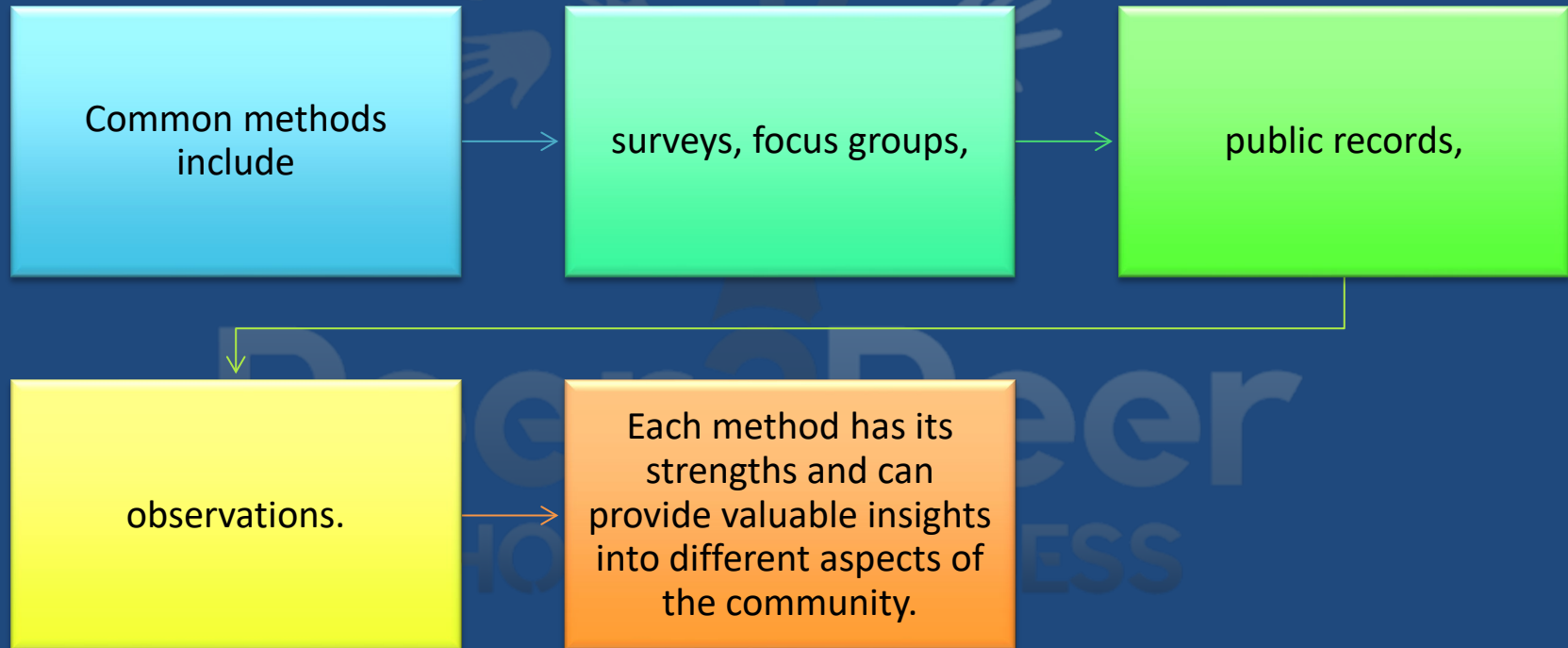
Defining the Community

Start by clearly defining the community you are assessing.

Consider geographic boundaries, demographic characteristics, and the specific population you are focusing on.



Data Collection Methods

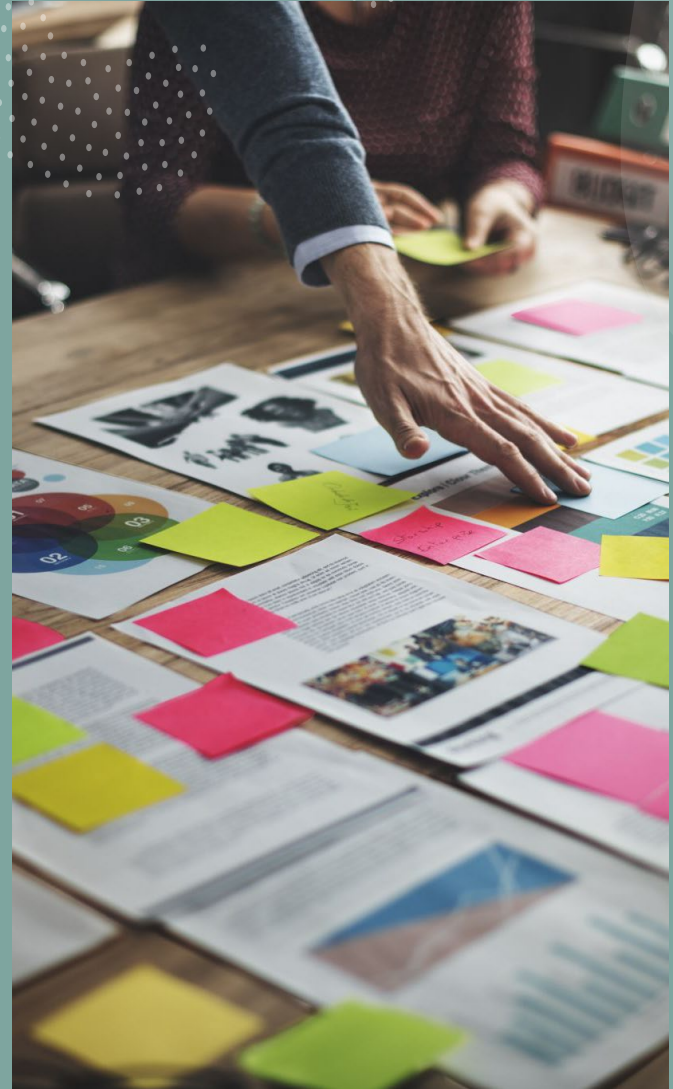


Survey Design and Implementation


Surveys are a widely used tool for collecting quantitative data.

Effective survey design includes

- clear questions,
- appropriate response options,
- careful sampling to ensure representative data.



Conducting Focus Groups



Focus groups
gather
qualitative
data through
group
discussions.



They provide
in-depth
insights into
community
members'

attitudes
perceptions
experiences

Peer2Peer
E-WELLNESS
Estd. 2014

Participatory Action Research



Participatory Action Research
(PAR)

Involves community members
participating actively in the
research process.

This approach

- empowers the community,
- enhances relevance
- ensures that findings are
directly applicable



Community Mapping

A background graphic consisting of several colorful hands in various colors (blue, green, purple, yellow, red) reaching upwards, positioned behind the title.

Community mapping is a visual tool that identifies

Community Assets

Resources

Needs

It helps to visualize the distribution of services and gaps. Facilitating strategic planning and resource allocation.



Using Technology for Data Collection

Technology enhances data collection efficiency and reach.

- Mobile apps,
- online surveys,
- GIS (geographic information system)

These tools provide real-time data and geospatial insights, making the assessment process more dynamic and inclusive.



Peer2Peer
WHOLE-WELLNESS

Advanced Survey Techniques

Advanced survey techniques include

- longitudinal surveys,
- cohort studies
- and mixed-methods approaches.

These techniques provide richer, more detailed data over time and across different population segments.

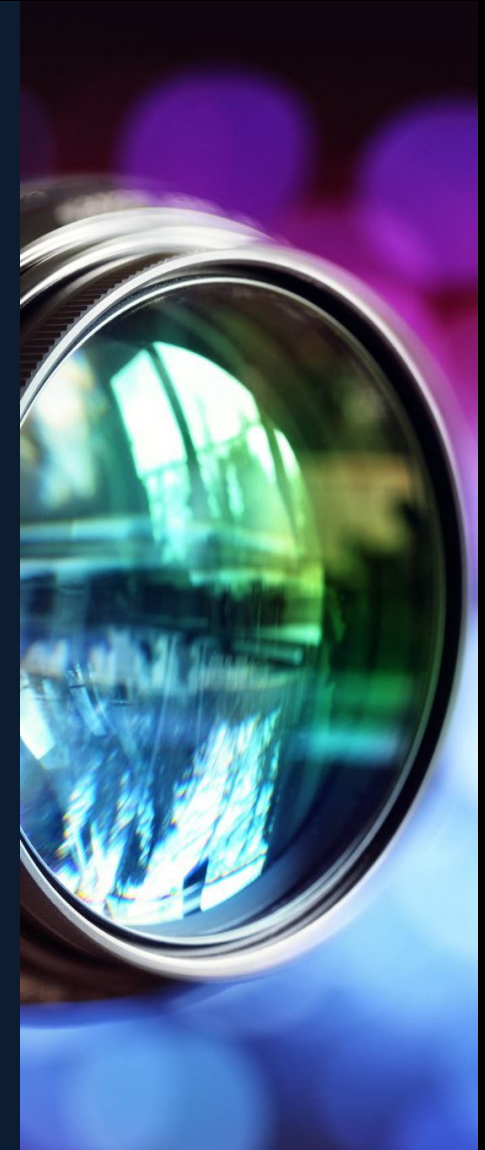




Conducting In-Depth Interviews

In-depth interviews gather detailed qualitative data from key Community members.

They provide deep insights into specific issues, experiences, and perspectives that are not captured through other methods.



Analyzing Qualitative Data

Qualitative data analysis involves coding, thematic analysis, and narrative synthesis. Software tools like NVivo help manage and interpret large volumes of qualitative data, revealing patterns and insights.



Peer2Peer

WHOLE-WELLNESS

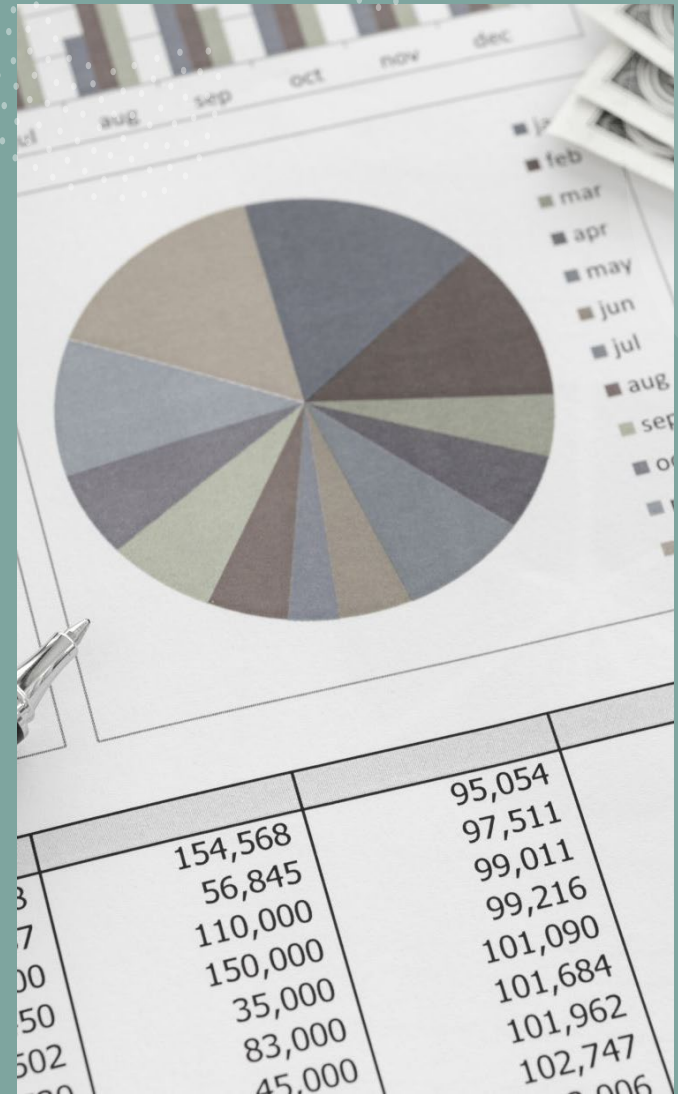
Es

Advanced Quantitative Analysis

Quantitative analysis methods

- include regression analysis
- factor analysis,
- and multivariate analysis.

These techniques identify relationships between variables and predict outcomes, providing robust data insights.



Mixed Methods Approach

A mixed methods approach combines qualitative and quantitative data, offering a comprehensive understanding of community issues.

It leverages the strengths of both data types for a holistic view.

Engaging Hard-to-Reach Populations



Engaging hard-to-reach populations requires tailored outreach and culturally sensitive approaches.

Building trust and using community liaisons can improve participation and data quality.

Peer 2 Peer
WHOLE-WELLNESS

Building Community Trust

Trust is essential for effective community engagement. Strategies to build trust include transparency, consistent communication, and demonstrating respect for community values and concerns.